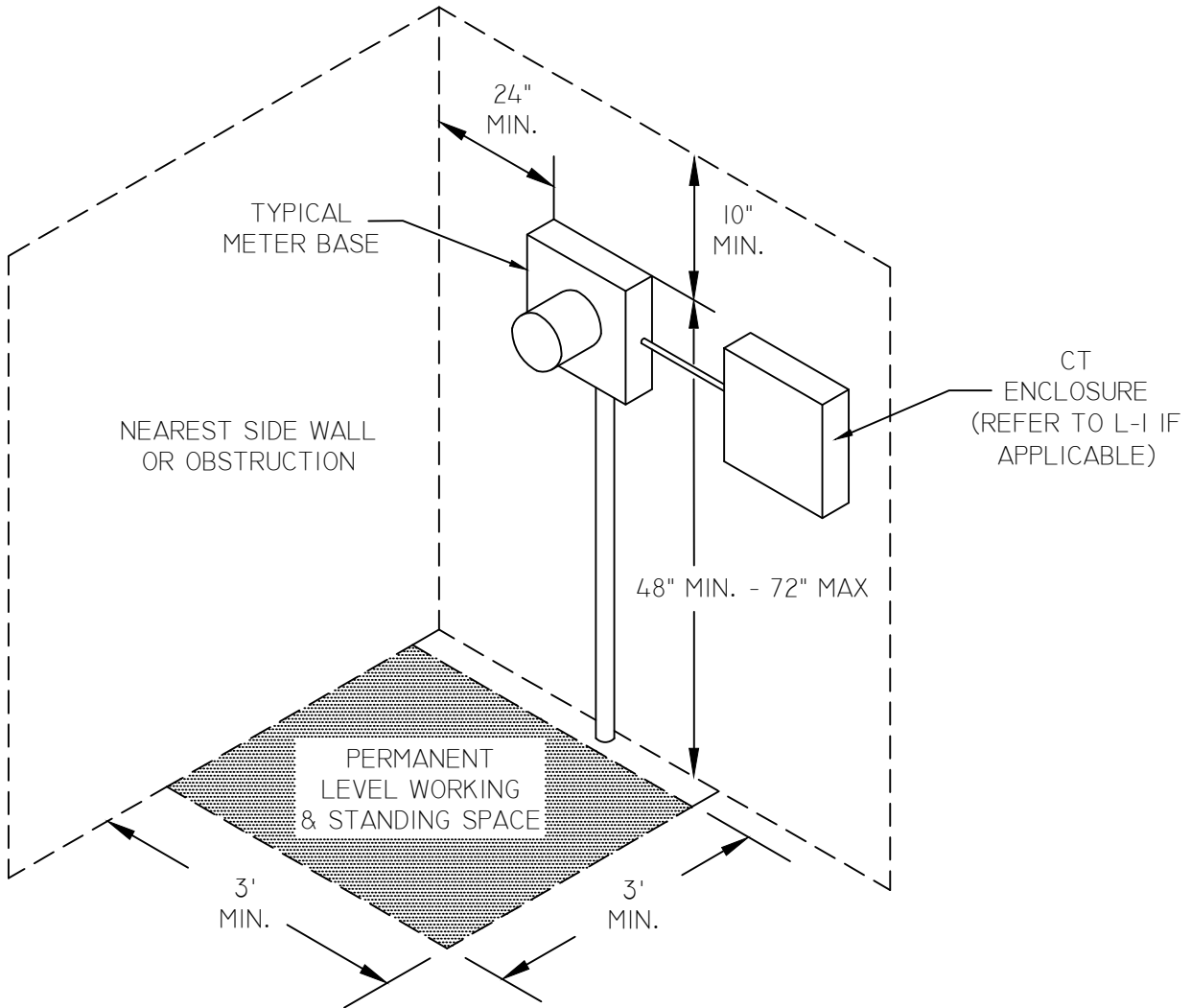


REQUIRED METER CLEARANCES



GENERAL NOTES:

- 1) SEE CITY SPEC L-1 FOR METER TYPES
- 2) SEE CITY SPEC L-6, L-7 AND L-8 FOR TYPICAL SERVICE TYPES
- 3) IF METER BASE IS RECESSED, SEE CITY SPEC L-9 FOR DETAILS
- 4) ANY NON BUILDING MOUNTED METER BASES SEE THE CITY OF ELLENSBURG ELECTRICAL ENGINEER

REVISED 8/17/17

City of Ellensburg – Energy Services
Standard Design Practices

ELECTRICAL SERVICE (>200AMPS TO <800AMPS)
METER CLEARANCE REQUIREMENTS

APPROVED BY: PM

SCALE: NTS

FILE NAME:

P:\PROJECTS\LIGHT\SPEC BOOK\STANDARDS
 LIBRARY\ELECTRIC STANDARDS & SPECIFICATIONS\
 I – STANDARD PRACTICES\L METERING

PLAN NUMBER:

DRAWN BY: TH

DATE: 11/15/2004

L-2